



EXG 10

EXG 12

EXG 16

EXG Technical data

Pedestrian forklift truck



first in intralogistics

A solid orange horizontal bar at the bottom right of the page.

In accordance with VDI guidelines 2198 and 3597, respectively, this specification applies to the standard model only. Alternative tyres, mast types, ancillary equipment, etc. may result in different values.

Characteristics				STILL	STILL	STILL
1.1	Manufacturer			EXG 10	EXG 12	EXG 16
1.2	Manufacturer's model designation			Electric	Electric	Electric
1.3	Drive (electric, diesel, petrol, LPG, mains)			Pedestrian	Pedestrian	Pedestrian
1.4	Control (manual, pedestrian, stand-on, driver seated, order picker)					
1.5	Rated capacity/load	Q	kg	1000	1200	1600
1.6	Load centre distance	c	mm	500	500	500
1.8	Load centre	x	mm	100	100	105
1.9	Wheel base	y	mm	1270	1270	1635
Weights						
2.1	Tare weight (incl. battery)		kg	1930	2060	2020
2.2	Axle load without load	drive end/load end	kg	660/2270	620/2640	730/2890
2.3	Axle load with load	drive end/load end	kg	1125/805	1180/880	1310/710
Wheels Tyres						
3.1	Tyres			Polyurethane	Polyurethane	Polyurethane
3.2	Tyre size	drive end	mm	ø 254 x 102	ø 254 x 102	ø 254 x 102
3.3	Tyre size	load end	mm	4x ø 85 x 105	4x ø 85 x 105	4x ø 85 x 105
3.5	Wheels, number (x = driven)	drive end/load end		1x / 4	1x / 4	1x / 4
3.7	Track width	load end	b ₁₀ mm	483	483	483
Basic dimensions						
4.1	Mast/fork carriage tilt forward (option)		°	1	1	1
4.1.1	Mast/fork carriage tilt backward (option)		°	6	6	6
4.2	Closed mast height	h ₁	mm	1690	1940	1940
4.3	Free lift	h ₂	mm	1129	1379	1379
4.4	Lift	h ₃	mm	2424	2924	2844
4.5	Extended mast height	h ₄	mm	2985	3485	3405
4.9	Tiller height in driving position	min./max.	h ₁₄ mm	1140/1350	1140/1350	1140/1350
4.15	Lowered fork height		h ₁₃ mm	40	40	45
4.19	Overall length without load		l ₁ mm	2550	2550	2920
4.20	Length incl. fork back		l ₂ mm	1550	1550	1920
4.21	Overall width		b ₁ mm	790/890	790/890	790/890
4.22	Fork arm dimensions		s/e/l mm	40 x 80 x 1000	40 x 80 x 1000	45 x 100 x 1000
4.24	Width fork carriage		b ₁ mm	800/900/1000	800/900/1000	800/900/1000
4.31	Floor clearance		m ₁ mm	40	40	40
4.32	Floor clearance, centre wheel base		m ₂ mm	40	40	40
4.33	Working aisle width at pallet dim. 1000 x 1200 crosswise		A _{st} mm	2933	2933	3302
4.34	Working aisle width at pallet dim. 800 x 1200 lengthwise (b ₁₂ x l ₂)		A _{st} mm	3040	3040	3410
4.35	Turning radius		W ₆ mm	1480	1480	1845
Performance						
5.1	Driving speed	with/without load	km/h	6/5	6/5	6/5
5.2	Lift speed	with/without load	m/s			
5.3	Lowering speed	with/without load	m/s			
5.10	Service brake			Electric	Electric	Electric
Electric motor						
6.1	Drive motor, performance at S2 = 60 min	kW	kW	3	3	3
6.2	Lift motor, performance at S3 = 15%	kW	kW	3	3	3
6.3	Battery in accordance with DIN 43531/35/36; A, B, C, no			DIN 43535	DIN 43535	DIN 43535
6.4	Battery voltage, nominal capacity K _s	V/Ah	V/Ah	24/375	24/500	24/500
6.5	Battery weight ± 5% (acc. to manufacturer)	kg	kg	287	365	365
6.6	Consumption per VDI cycle	kWh/h	kWh/h			
Other						
8.1	Type of drive control			AC control	AC control	AC control
8.4	Noise level, driver's ear		dB (A)	<70	<70	<70

Overall concept:

The new EXG tiller operated lift truck from STILL offers every benefit of a conventional lift truck in a modern and powerful machine:

- No straddle arms for easy and swift storage/retrieval of loads or to pick up enclosed load carriers.
- Fork carriage with FEM interface to allow standard attachments.
- Excellent residual capacities.
- Compensation of fork deflection by mast tilt.

Benefits of tiller operated trucks:

- No driving licence required, instruction is sufficient.
- No mounting and leaving of the truck for quick and easy order picking.
- No hazard to pedestrians.
- Perfect panoramic visibility.
- High manoeuvrability.

Flexible for individual requirements.

- FEM fork carriage as interface for attachments, on request with up to 2 hydraulic functions.
- Large selection of batteries for any demand of service time and residual capacity. Change of the battery over the side available on request.
- Masts: Duplex mast, duplex mast with full free lift and triplex mast with a lift height of up to 4.30 m.

Ergonomics and comfort.

- Smooth, precise and direct electric steering.
- Many handy storage compartments on the battery cover.
- Display with alarm function, operating hour meter and inspection interval indicator.
- Free-view mast.
- Automatic speed reduction when cornering.

Productivity.

- Powerful and enduring drive and lift pump motors.
- Precise positioning of loads.
- Rated load capacity up to 1.6 tons.

Technical features.

Drive.

- Fully encapsulated, maintenance free 3-kW three-phase motor.
- Start of uphill drive without rolling back.
- Efficient drive characteristics.
- Electric service brake with energy recuperation.
- Powerful 3-kW pump motor.

Tiller head.

- Ergonomic layout of controls for easy operation by left and right handed operators.
- Pressure buttons for horn, lift and lowering are always in reach without changing grip, also when operating the truck single-handed.
- Very rugged tiller head.

Wheels and tyres.

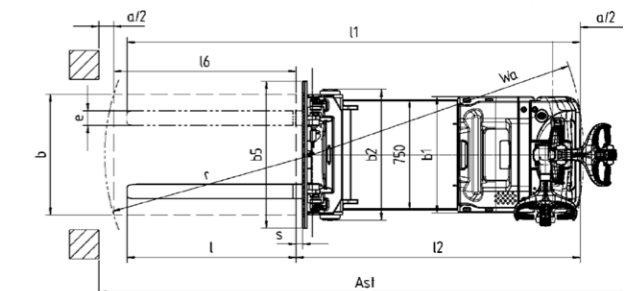
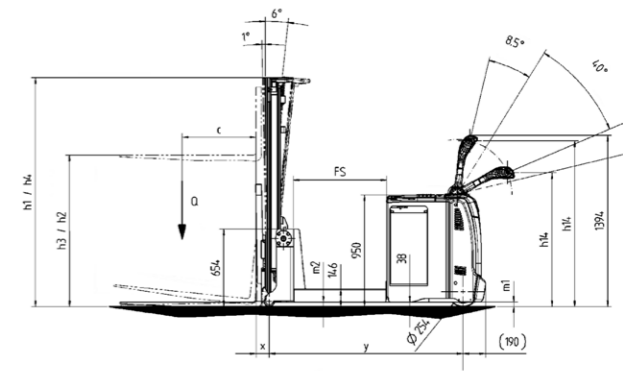
- 2 pairs of Polyurethane load rollers mounted on a rocker-carriage.
- Large Polyurethane drive wheel (ø 254 x 102 mm).

Electric system.

- Modern CAN bus technology design.
- IP-54 protection to shield the complete electric system against dust and humidity.

Additional equipment.

- Mast tilt +1°/-6°.
- Load rest.
- Progressive lowering of the fork carriage.
- Preparation for material flow management system (MMS).
- Battery change over the side (4 PzS).
- Cold store version up to -35 °C.



	Tele mast						HiLo mast					Triplex mast		
	EXG 10						EXG 10					EXG 10		
h ₁	1515	1765	2015	2215	2465		1440	1690	1940	2140	2390		1690	
h ₁ '	1590	1840	2090	2290	2540		-	-	-	-	-		-	
h ₂	150	150	150	150	150		962	1212	1462	1662	1912		1129	
h ₃	1924	2424	2924	3324	3824		1924	2424	2924	3324	3824		3516	
h ₄	2485	2985	3485	3885	4385		2485	2985	3485	3885	4385		4077	
EXG 12						EXG 12					EXG 12			
h ₁	1515	1765	2015	2215	2465	2665	1440	1690	1940	2140	2390	2590	1690	1940
h ₁ '	1590	1840	2090	2290	2540	2740	-	-	-	-	-	-	-	-
h ₂	150	150	150	150	150	150	962	1212	1462	1662	1912	2029	1129	1379
h ₃	1924	2424	2924	3324	3824	4224	1924	2424	2924	3324	3824	4224	3516	4266
h ₄	2485	2985	3485	3885	4385	4785	2485	2985	3485	3885	4385	4785	4077	4827
EXG 16						EXG 16					EXG 16			
h ₁	1515	1765	2015	2215	2465	2665	1440	1690	1940	2140	2390	2590	1690	1940
h ₁ '	1590	1840	2090	2290	2540	2740	-	-	-	-	-	-	-	-
h ₂	150	150	150	150	150	150	879	1129	1379	1579	1829	2029	1129	1379
h ₃	1844	2344	2844	3244	3744	4144	1844	2344	2844	3244	3744	4144	3516	4266
h ₄	2405	2905	3405	3805	4305	4705	2405	2905	3405	3805	4305	4705	4077	4827

h1': Max height of mast with forks raised to 150 mm.



Your contact

STILL GmbH
Berzeliusstraße 10
D-22113 Hamburg
Telephone: +49 (0)40/73 39-2000
Telefax: +49 (0)40/73 39-2001
info@still.de

For further information please visit:
www.still.de

STILL Materials Handling Ltd.
Aston Way, Leyland
Lancashire PR26 7UX
Telephone: +44 (0)1772 644300
Telefax: +44 (0)1772 644303
info@still.co.uk

For further information please visit:
www.still.co.uk